



IKK GOLD CORP

Exploring for Gold and Critical Metals



Forward Looking Statement

This Presentation includes, and is based on, forward-looking information and statements including “Forward-Looking Statements” within the meaning of the United States Private Securities Litigation Reform Act. These Forward-Looking Statements include references to or assumptions regarding future prices or demand for vanadium, accuracy of mineral or resource exploration activity, the existence of reserves or resources, regulatory or government requirements or approvals, access to third party information and continued access to mineral properties or infrastructure. The words “anticipate”, “believe”, “estimate”, “expect”, “target”, “plan”, “fast”, “forecast”, “may”, “schedule”, “strategy” and similar words or expressions identify forward-looking information and statements. Forward looking statements are subject to risks and uncertainties that could cause actual results and outcomes to differ.

These risks and uncertainties include, but are not limited to, economic conditions globally, the impact of competition, political and economic developments in the countries in which the Company operates, fluctuations in the margins for the Company’s product, economic and market conditions in the geographic areas and industries that are or could be major markets for the Company’s business, vanadium and uranium prices and market fluctuations, changes in governmental regulations, interest rates, accuracy of mineral or resource exploration activity, the possibility regulatory or government requirements or approvals will not be obtained, access to third party information, access to mineral properties or infrastructure, currency risks including the exchange rate of the USD\$ for the CDN\$, changes in exploration costs and government royalties or taxes in Canada or USA, disputes with indigenous peoples or other stakeholders and such other factors as may be discussed from time to time. Although the Company believes that its expectations and the information in this Presentation are based upon reasonable assumptions at the time when they are made, it can give no assurance that those expectations will be achieved or that the actual outcomes or results will be as set out in this Presentation.

The Company is not making any representation or warranty, expressed or implied, as to the accuracy, reliability or completeness of the information in the Presentation, and neither the Company nor any of its directors, officers or employees will have any liability to the reader or any other persons resulting from the reader’s use of the information in the Presentation. The Company undertakes no obligation to publicly update or revise any forward-looking information or statements in the Presentation. The reader should consult any further disclosure the Company may make in documents it files with applicable securities regulators.

This Presentation is intended for educational and informational purposes only and does not replace independent professional judgment. Statements of fact and opinions expressed are those of the participants individually. The information is not designed to provide financial, tax planning, accounting, investment, business or legal advice in any way whatsoever. The reader should consult with a lawyer, accountant and other professionals in respect of the contents hereof. Furthermore, the information in no way should be construed or interpreted as, or as a part of, an offering of, or a solicitation for the purchase of, securities. Investors are advised to discuss any trading with a registered securities broker or personal finance professional prior to investing.

The technical information contained in this presentation has been reviewed and approved by Chris Healey P.Geos , a Qualified Person as that term is defined in National Instrument 43-101.



The Stony Lake Gold Project

The Stony Lake Property covers 13,625 ha and 27 kilometers of favorable trend between Sokoman's Moosehead discovery to the northeast and Marathon's Valentine Lake deposit to the southwest. The structure trends parallel to New Found Gold's Queensway Project.

2022 Exploration



DCIP
Survey



Soil
Sampling



Trenching

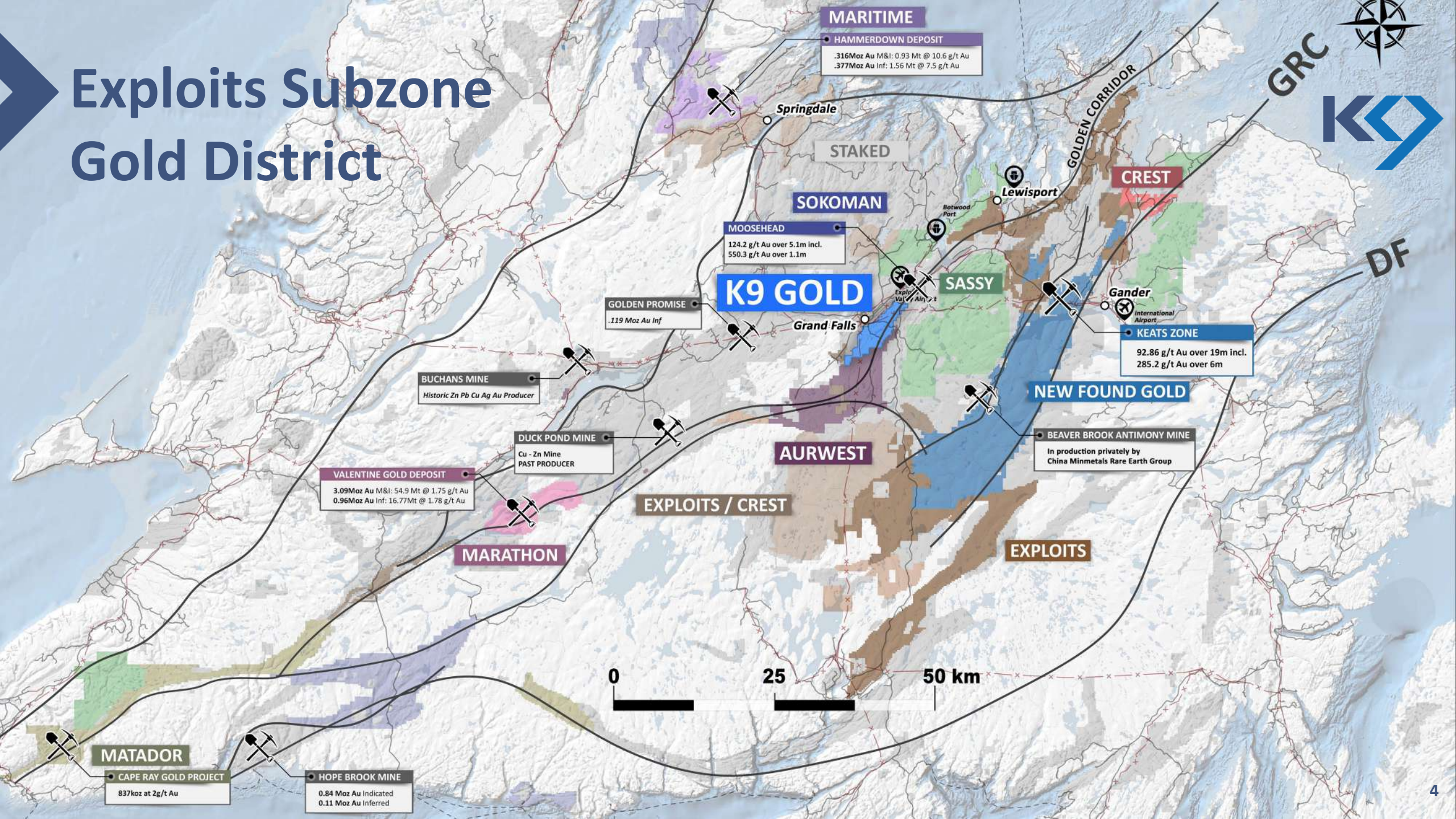


Drilling



Geological
Mapping

Exploits Subzone Gold District



Project Highlights



Primary target is Jumper's Pond in extreme NE of property



Multiple wide mineralized drill intercepts at Jumper's Pond zone



JP21-022 65 m @0.78 g/t Au
 JP22-029 32 m @1.52 g/t Au
 JP22-030 27 m @ 1.88 g/t Au



New highly significant discovery at Moonlight zone, 14 km SW of Jumper's Pond



ML21-016 intersected 9.52 meters averaging 0.84 g/t Au



Soil sampling in Moonlight trench returned 15.0 m averaging 0.81 g/t Au



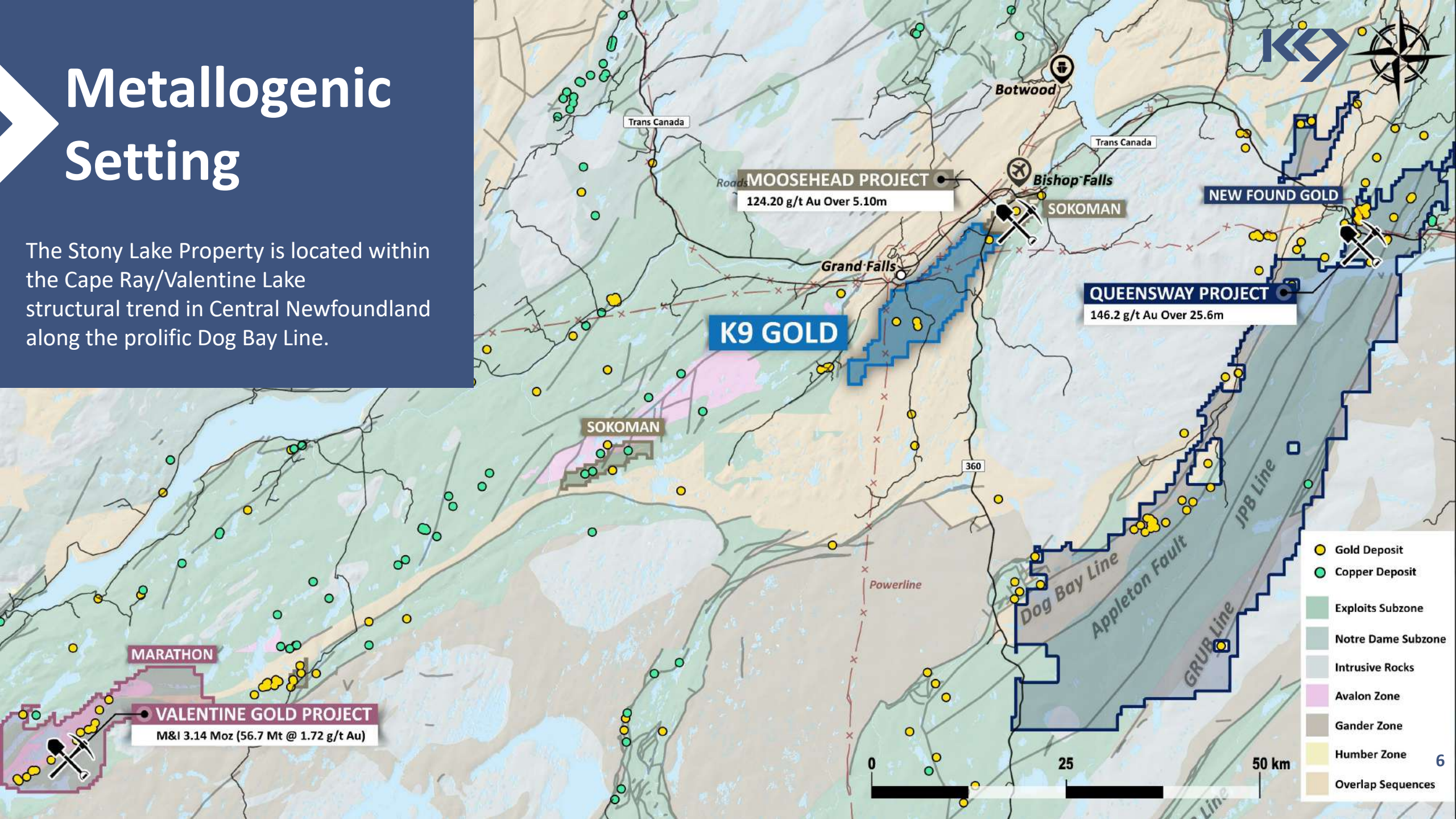
Multiple geophysical and geochemical anomalies in Moonlight area



Importance of inflexion points on Cape Ray – Valentine Lake regional structure leading to more high priority targets

Metallogenic Setting

The Stony Lake Property is located within the Cape Ray/Valentine Lake structural trend in Central Newfoundland along the prolific Dog Bay Line.





Stony Lake

Deposit Models:

- Widespread low grade (0.5 to 4.0 g/t Au) mineralized pyritic sandstone, quartz veins and quartz stockwork as seen exposed in the Silurian-age Botwood Group sediments
- A high-grade gold environment (similar to Sokoman's Moosehead and New Found Gold's Queensway projects) in the basement rocks below the Botwood sediments

Geology:

- Located on the interpreted Cape Ray – Valentine Lake (“CRVL”) structural trend
- CRVL covered by oxidized, Silurian, sedimentary rocks
- Significant post-sediment felsic intrusives
- Mineralization is associated with sericite, silica, ankerite, carbonate, and chlorite as pervasive wallrock alteration, and vein haloes

Exploration Highlights



Completed 9784 metres of diamond drilling in 32 holes.



These zones typically exhibit a pyrite-arsenopyrite-stibnite mineral association.



Pyrite and arsenopyrite (1-3% total sulfide) are commonly associated with gold mineralization, specifically in all samples greater than 50 ppb gold.



Extensive soil sampling (>3000 samples) discovered multiple new targets.



Intersected multiple wide zones of shearing and brecciation with quartz veining, mainly in Lawrenceton volcanics.



Trenching uncovered two new mineralized zones (Deliverance and Moonlight).



Sericite, silica, carbonate (including ankerite), and chlorite alteration are observed in mineralized zones, typically as pervasive haloes around quartz stockwork and quartz veins.



2 Induced Polarization surveys (51.5 line-km) completed to better define drill targets.

2021 Jumper's Pond Drilling



DRILL HOLE TRACES ARE BASED ON DOWNHOLE DIP AND AZIMUTH SURVEYS, EXCEPT FOR HOLES JP21-001-003. THERE ARE NO MEASUREMENTS FOR THESE HOLES - THE TRACES HAVE BEEN ESTIMATED FROM THE AVERAGE OF NEARBY HOLES



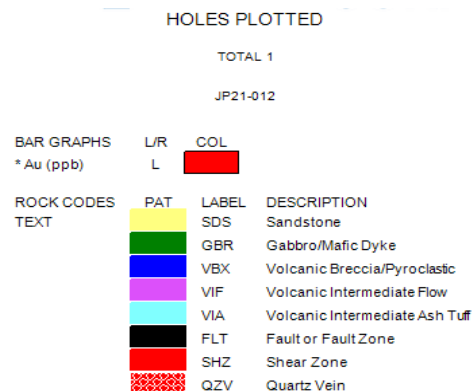
2021 Drill Sections

Au results

DDH	Easting	Northing	Azi	Dip	From (m)	To (m)	Interval (m)	Au (g/t)
<i>JP21-012</i>	610964	5425251	90	-55	175.00	197.20	23.20	0.77
					245.00	260.00	15.00	0.96
					297.00	317.00	20.00	0.94
<i>JP21-019</i>	610963	5425262	92	-45	73.40	84.55	11.15	0.62
<i>JP21-022</i>	610972	5425279	86	-55	32.15	81.00	48.85	0.28
					97.00	224.40	127.40	0.61
					98.50	150.90	52.40	0.93
				including				
<i>JP21-023</i>	610959	5425261	101	-50	136.80	164.80	28.00	0.61
<i>JP21-024</i>	610963	5425262	105	-50	20.85	35.60	14.75	0.40
					120.30	160.10	39.80	0.55

2021 Drill Section

Au results



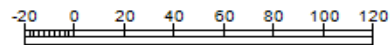
TEXT

SECTION SPECS:

REF. PT. E, N	611062 m	5425245 m
EXTENTS	500.5 m	379.6 m
SECTION TOP, BOT	100.4 m	-279.2 m
TOLERANCE +/-	4.734 m	

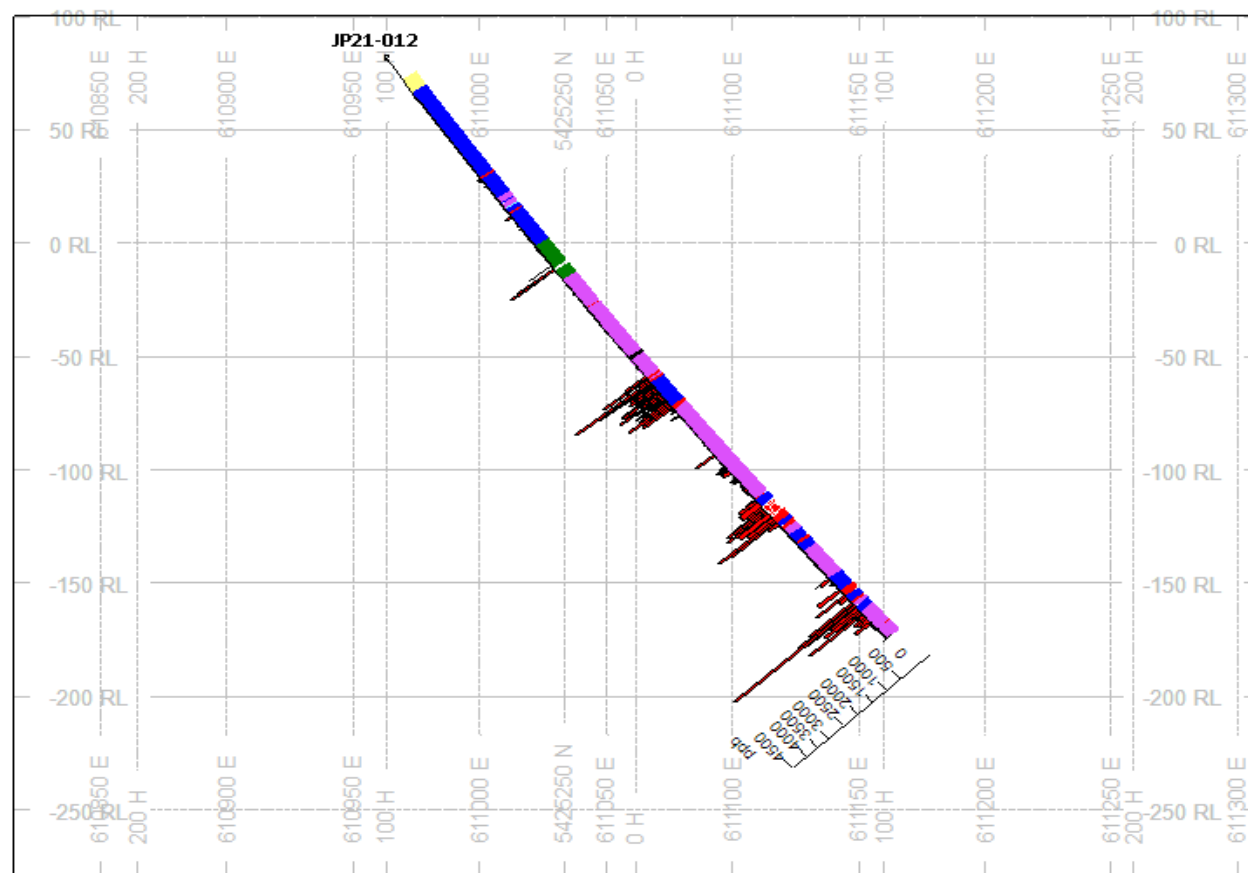
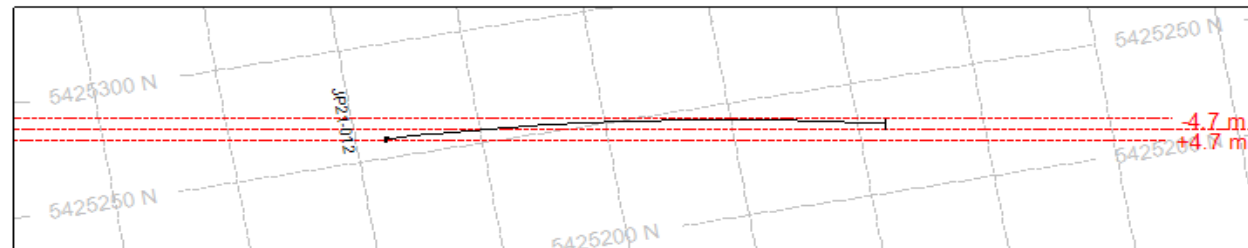
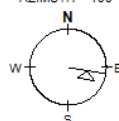
SCALE 1 : 3200

(m)



*unknown

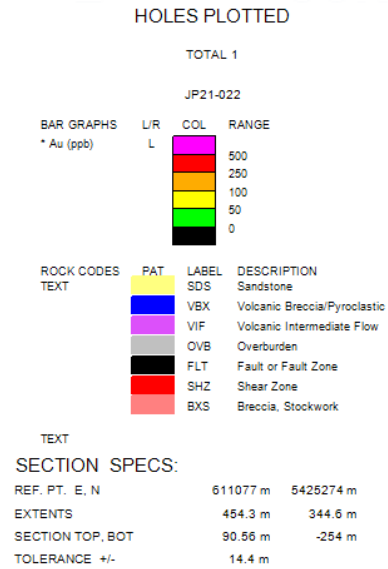
AZIMUTH = 100°





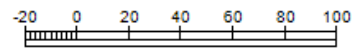
2021 Drill Section

Au results

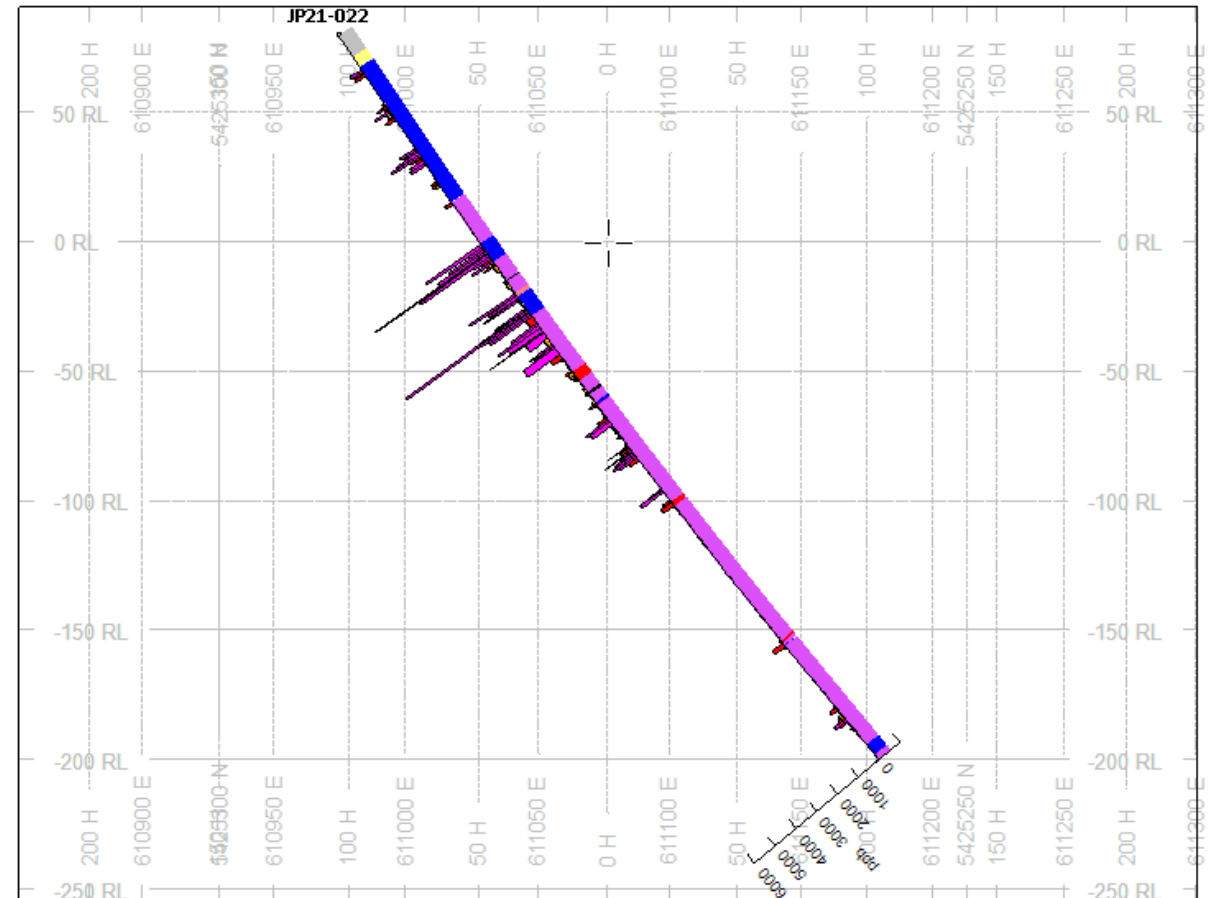
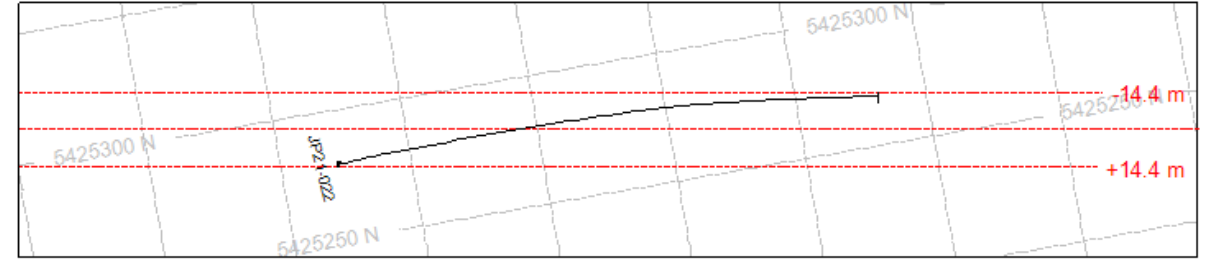
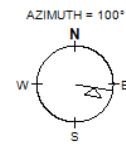


SCALE 1 : 2905

(m)



*unknown





2022 JUMPER'S POND DRILLING



Plan view
NE area of Jumper's Pond



2022 Drill Sections

Au results

DDH	Easting	Northing	Azi	Dip	From (m)	To (m)	Interval (m)	Au (g/t)
<i>JP22-025</i>					343.45	349.90	6.45	0.33
<i>JP22-026</i>					74.80	89.00	14.20	0.51
					105.50	115.70	10.20	0.80
<i>JP22-028</i>					155.40	164.90	9.50	0.87
					202.80	204.25	1.45	1.23
					316.85	318.60	1.75	2.13
<i>JP22-029</i>					238.75	270.50	31.75	1.52
<i>JP22-030</i>					225.00	252.35	27.35	1.88
				including	229.50	244.35	14.85	3.18
				including	234.50	237.35	2.85	5.36
<i>JP22-031</i>					149.0	155.80	6.80	1.71
				including	151.00	155.80	4.80	2.32
<i>JP22-032</i>					180.00	183.00	3.00	1.18



2022 Drill Section

Au results

HOLES PLOTTED

TOTAL 2

JP22-028 JP22-029

BAR GRAPHS

* Au (ppb)

L/R	COL
L	Red

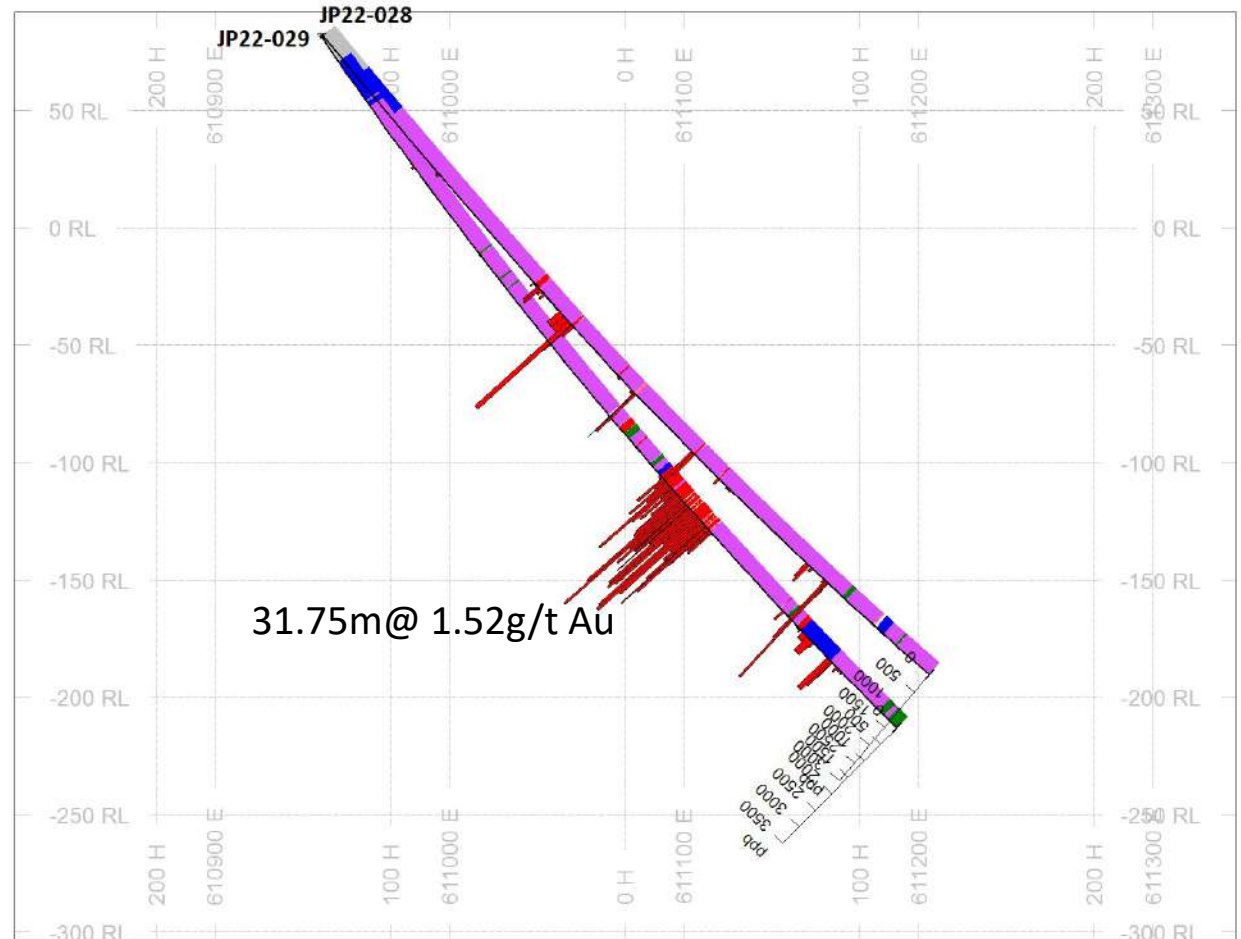
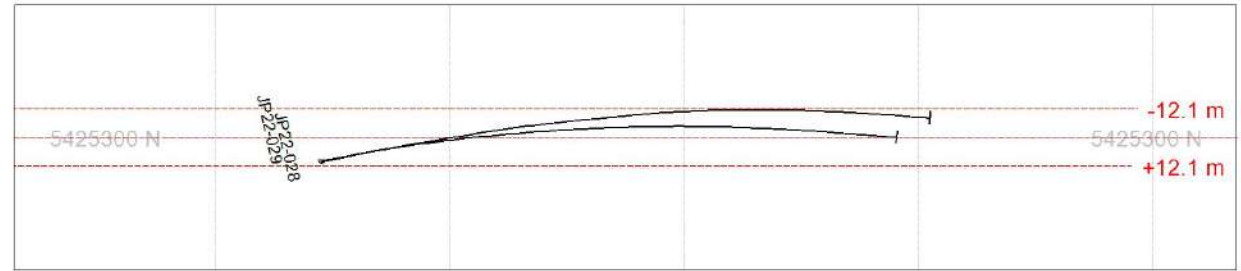
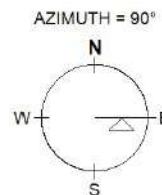
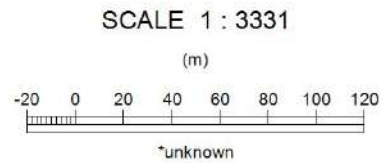
ROCK CODES

PAT	LABEL	DESCRIPTION
Green	GBR	Gabbro/Mafic Dyke
Blue	VBX	Volcanic Breccia/Pyroclastic
Purple	VIF	Volcanic Intermediate Flow
Grey	OVB	Overburden
Red	SHZ	Shear Zone
Red with dots	QZV	Quartz Vein
Pink	BXQ	Breccia, Quartz
Green	DYK	Mafic Dyke

TEXT

SECTION SPECS:

REF. PT.	E	N
	611075 m	5425300 m
EXTENTS	521 m	395.1 m
SECTION TOP, BOT	91.82 m	-303.3 m
TOLERANCE +/-	12.09 m	





2022 Drill Section

Au results

HOLES PLOTTED

TOTAL 1

JP22-030

BAR GRAPHS
* Au (ppb)

L/R COL
L █

ROCK CODES
TEXT

PAT	LABEL	DESCRIPTION
█	GBR	Gabbro/Mafic Dyke
█	VIF	Volcanic Intermediate Flow
█	VIL	Volcanic Lapilli Tuff Intermediate
█	OVB	Overburden
█	SHZ	Shear Zone
█	BXQ	Breccia, Quartz
█	DYK	Mafic Dyke

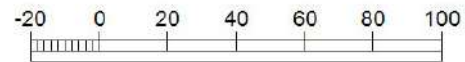
TEXT

SECTION SPECS:

REF. PT. E, N	611099 m	5425350 m
EXTENTS	469.2 m	355.8 m
SECTION TOP, BOT	108.5 m	-247.3 m
TOLERANCE +/-	2.381 m	

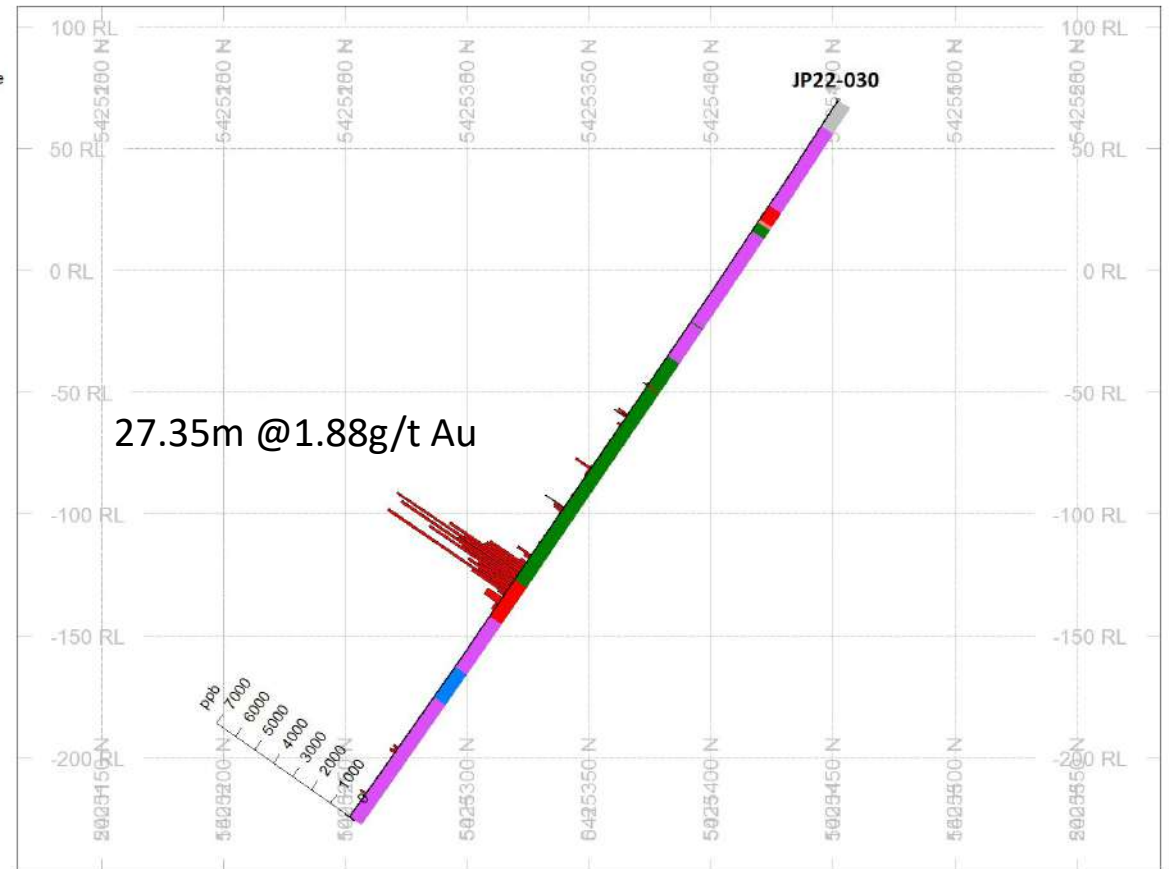
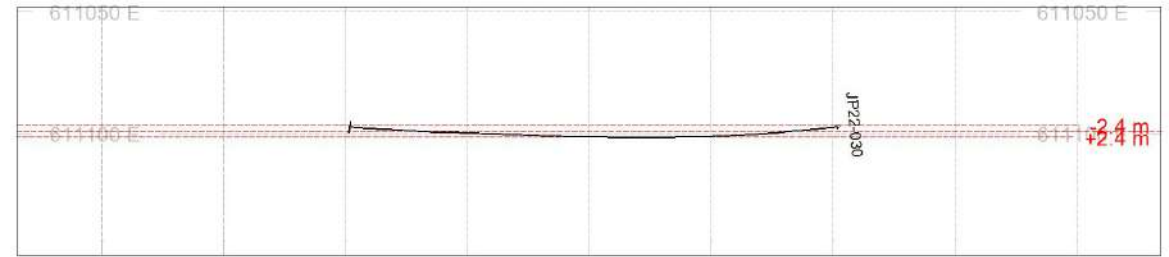
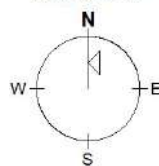
SCALE 1 : 3000

(m)



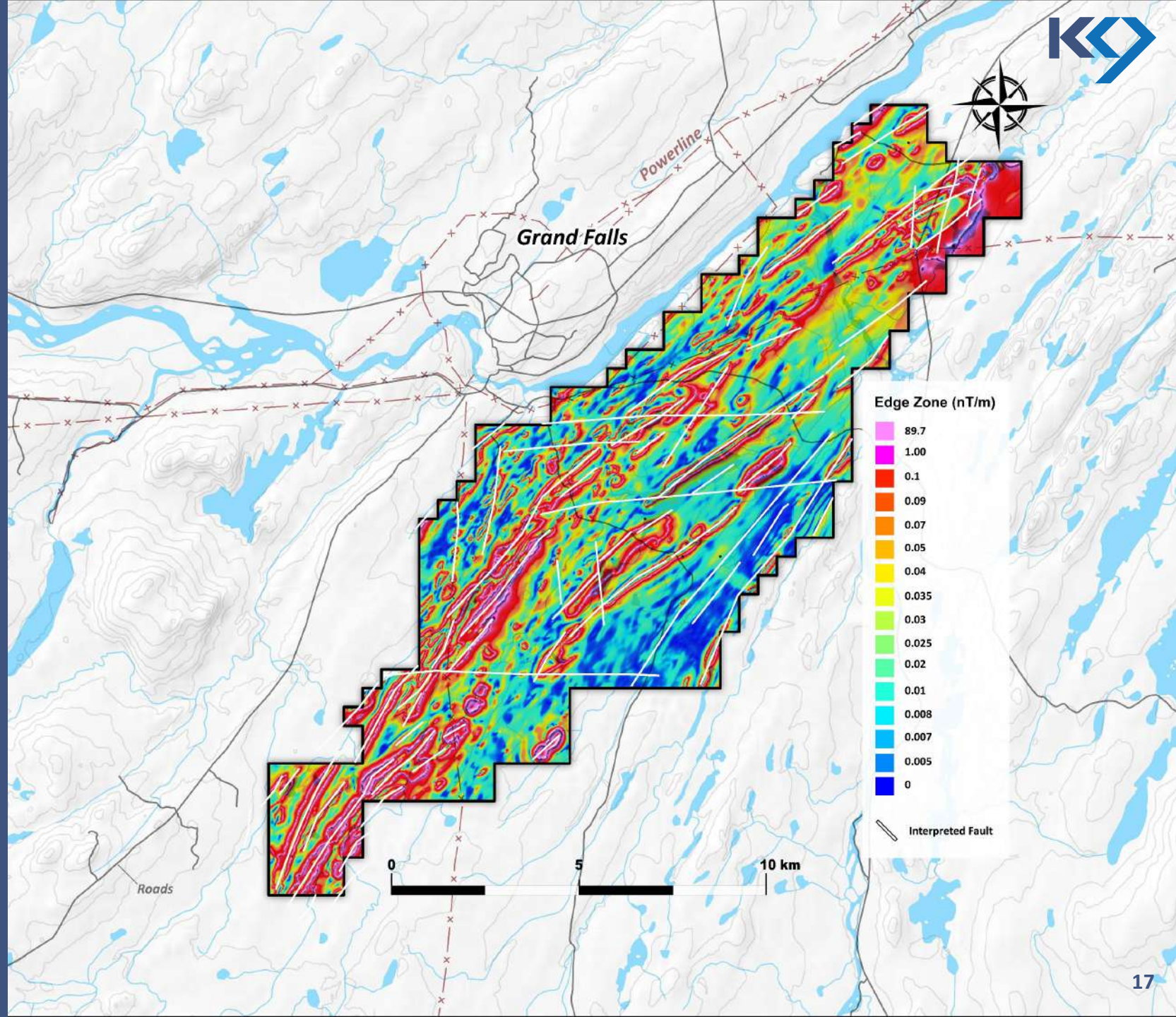
*unknown

AZIMUTH = 0°



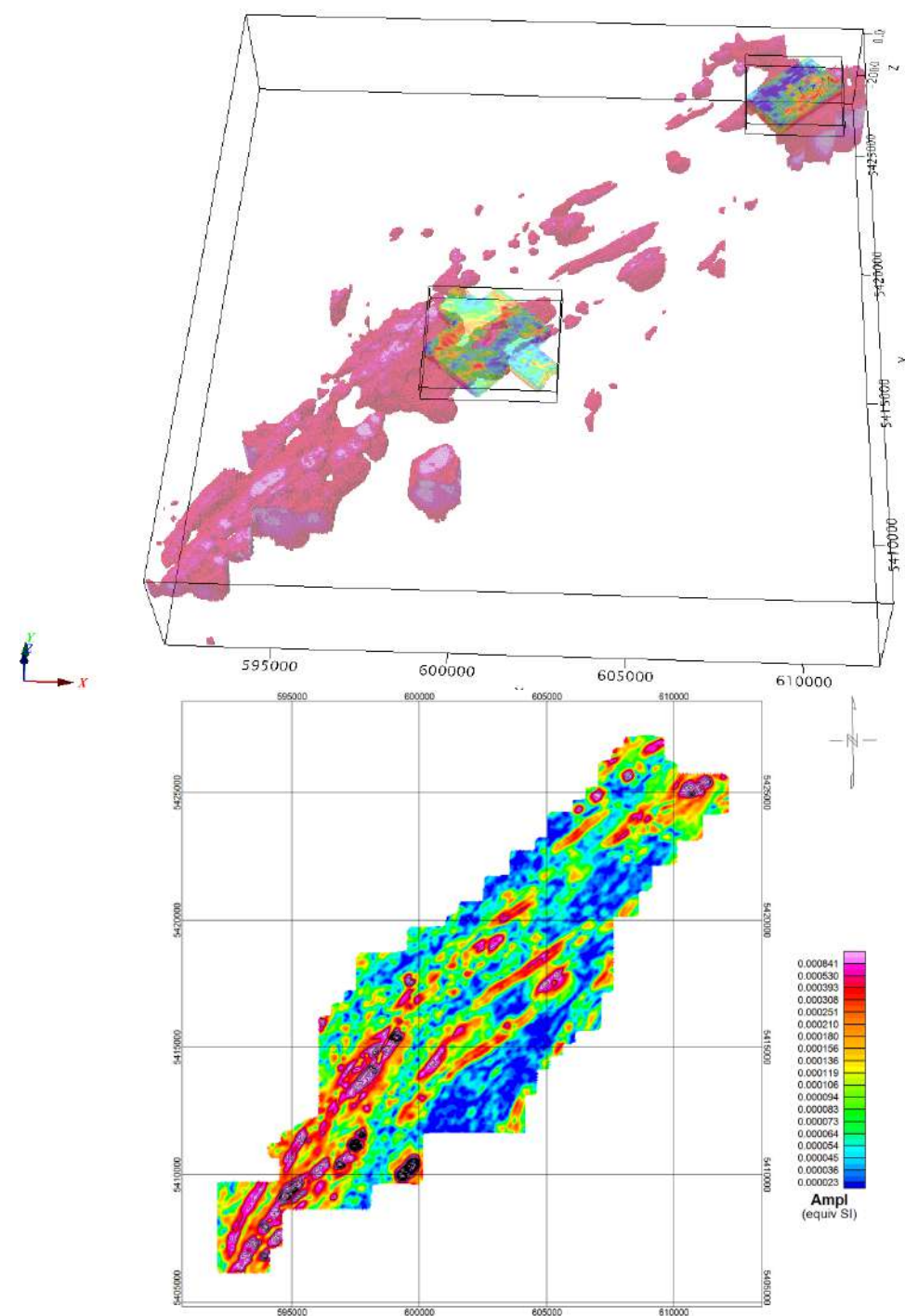
Geophysical Surveys

- The 2019 airborne magnetic and 2020 VTEM surveys and subsequent interpretation clearly show that the structural trend of Sokoman's Moosehead discovery crosses onto the Stony Lake property. This appears to be a primary basement structure, with multiple splays off it. Further 3D inversions have defined numerous high priority exploration targets.
- With the addition of the 2021 DCIP Survey, the interpretations indicate that concentration of zones of gold mineralization discovered in the Botwood sediments is along a NNE structural trend in association with inferred inflection zones. Drilling at 2 of these inflection zones, Jumper's and Moonlight, has intersected significant gold mineralization in the underlying volcanics.



2021 3D Inversion

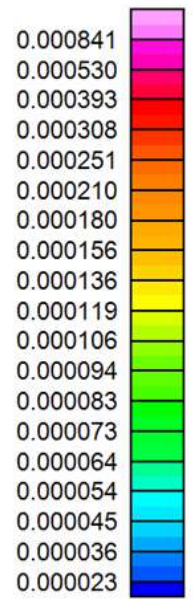
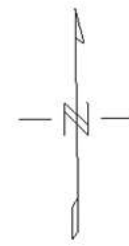
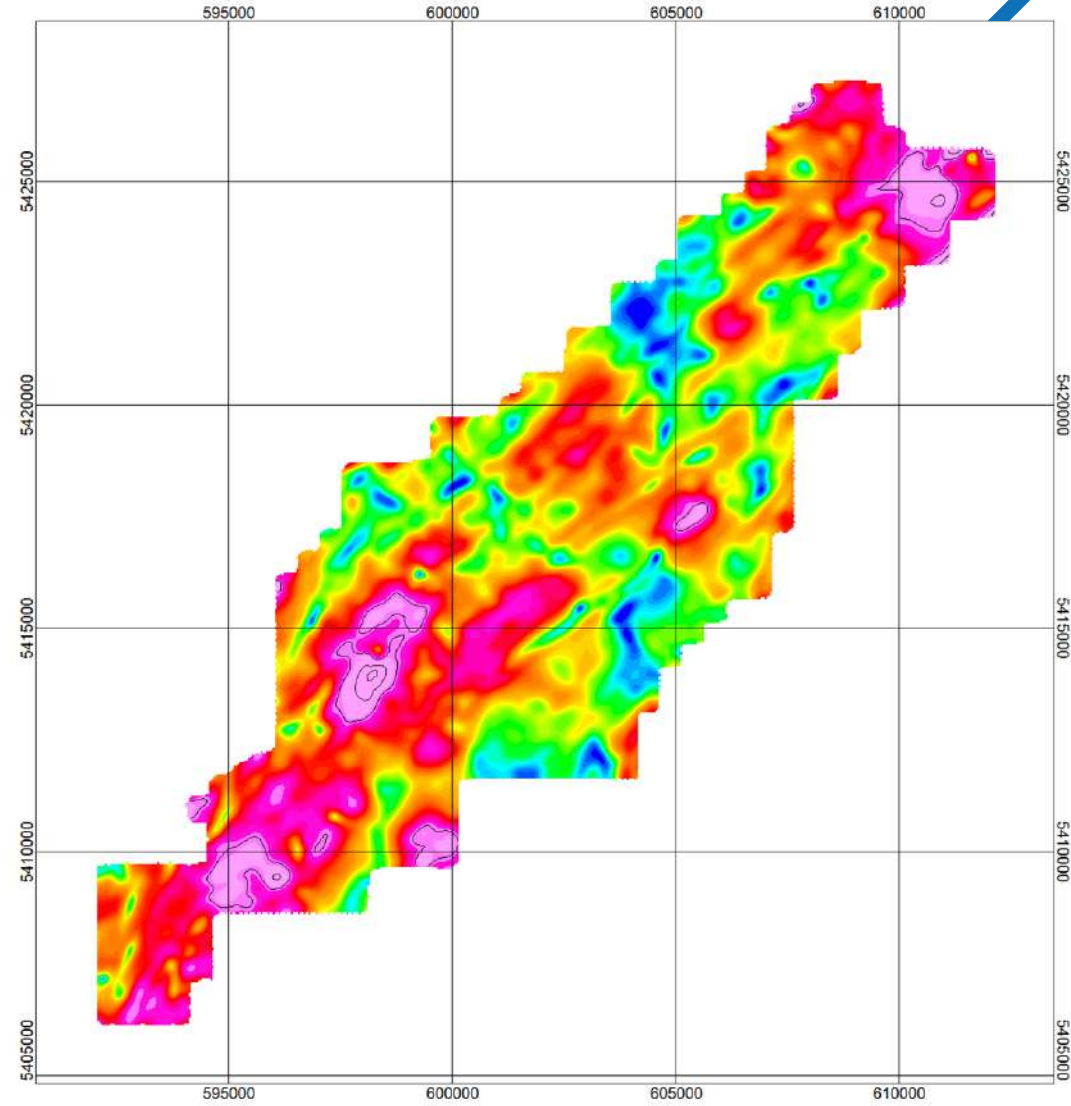
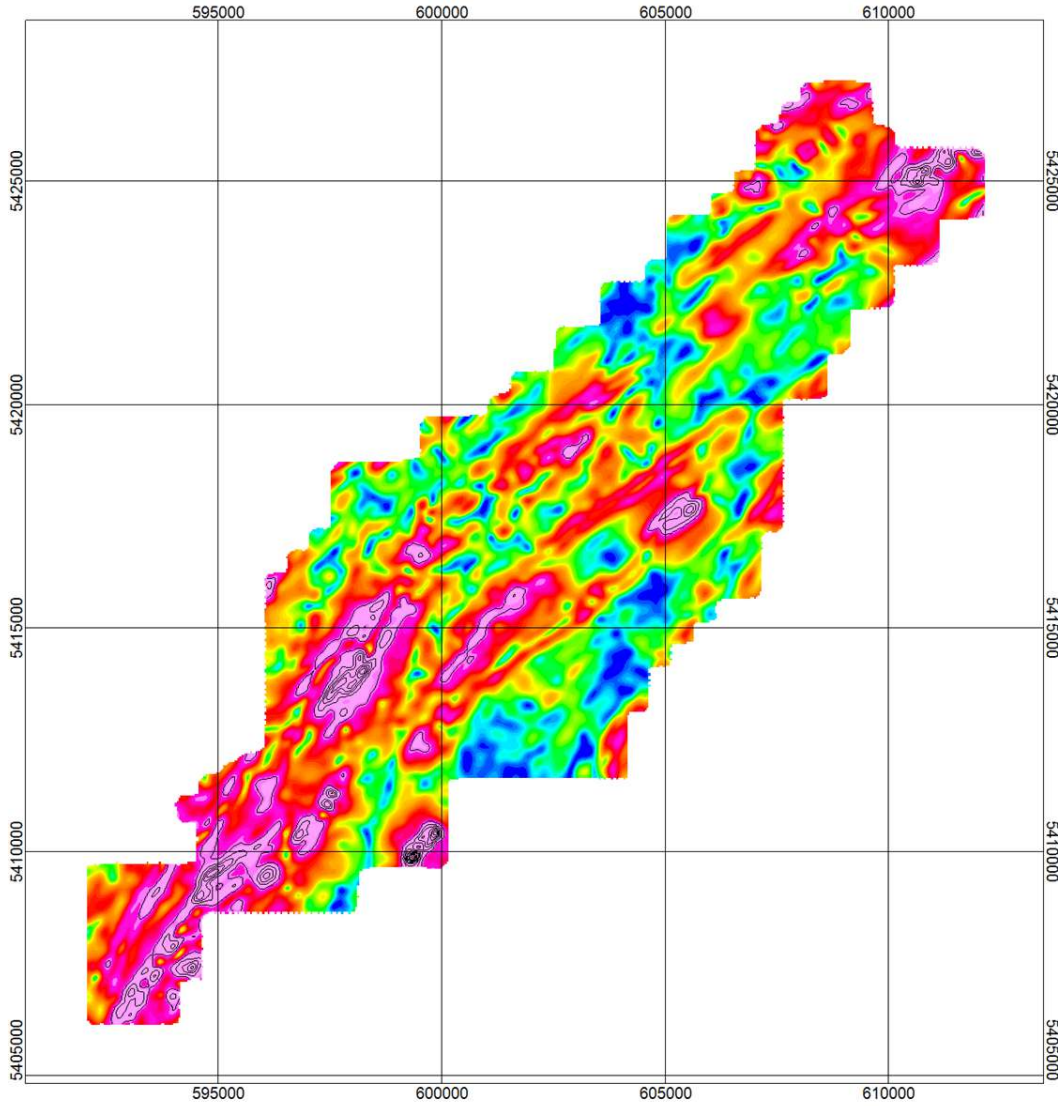
- A 3D inversion of the airborne magnetic data with the IP survey has helped to define subsurface structures and the focus of the maiden drill program.
- The NNE-trending anomaly intensifies toward the south of the property, which may represent potential shear structures.
- The NE corner of the property contains an anomalous magnetic high, which corresponds to known gold mineralization intersected at Jumper's Pond.





250m Depth Slice

450m Depth Slice

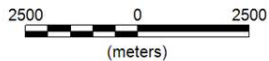


Ampl
(equiv SI)

K9 Gold Corp.
Stony Lake East Project

MVI 40 x 40m fine inversion
Recovered Amplitude model depth slice

Magnetization amplitude
Depth slice 250 m below surface
Contour interval 0.0005 equiv SI

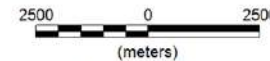


WGS 84 / UTM zone 21N

K9 Gold Corp.
Stony Lake East Project

MVI 40 x 40m fine inversion
Recovered Amplitude model depth slice

Magnetization amplitude
Depth slice 450 m below surface
Contour interval 0.0005 equiv SI



WGS 84 / UTM zone 21N

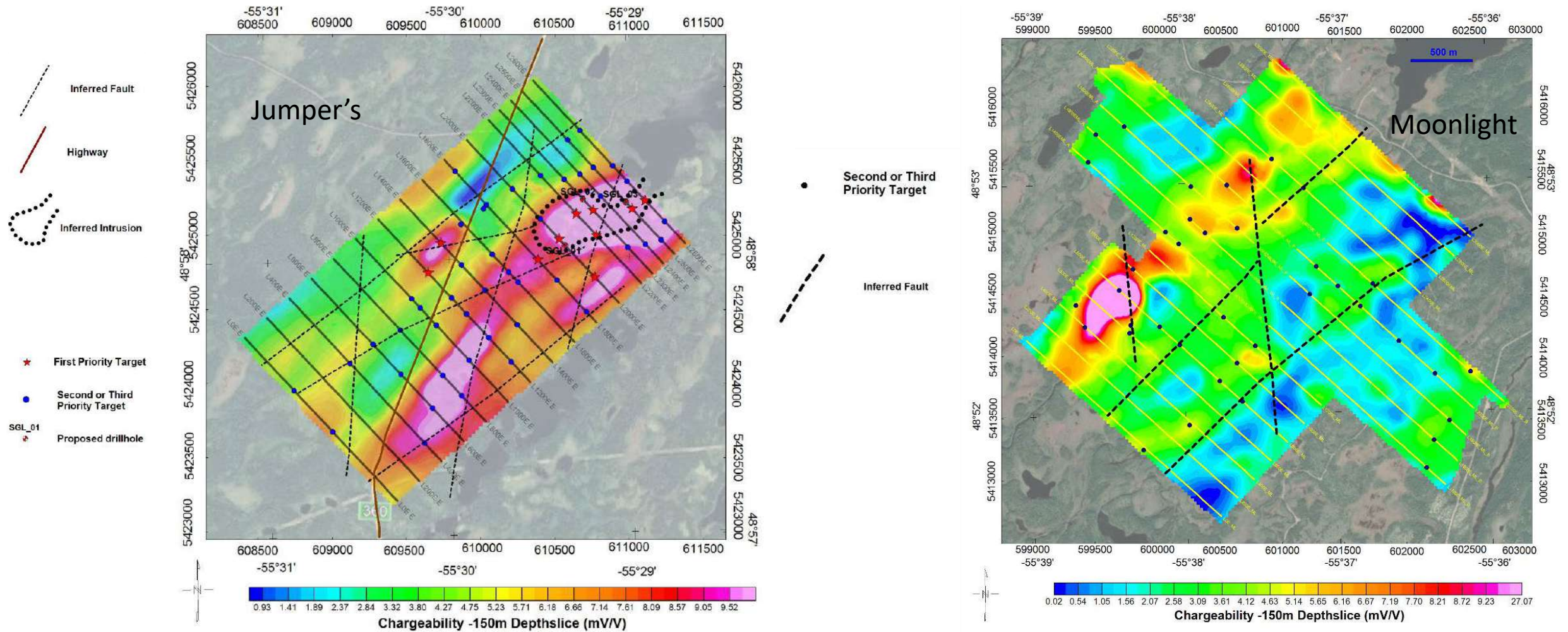


2021 IP Surveys with Interpreted Faults

Maps showing chargeability values from the DCIP survey at a depth of 150m at both Jumper's Pond and Moonlight.

Surveys were located at 2 of the interpreted structural inflection zones defined by the 3D magnetic inversion of the airborne mag and the VTEM surveys.

Faults inferred from all the surveys helped define the preliminary drill program.





Moonlight zone

The Moonlight Zone is located approximately 14 km SW of Jumper's Pond, along the same Cape Ray – Valentine Lake structural trend. There are multiple geophysical and geochemical anomalies in the area. Recent drilling intersected 9.52 m averaging 0.84 g/t Au (drillhole ML21-016).

The gold mineralization occurs in a quartz stockwork (quartz-pyrite-arsenopyrite mineral association) hosted in altered volcanic flows like the recently discovered gold mineralization at Jumpers Pond.

The gold mineralization in ML21-016 is located approximately 200 m west of a channel samples of the B horizon soil material that averaged 0.81 g/t Au over a width of 15 m (see company release December 2, 2021).

Float and subcrop samples in the immediate area range from 50 ppb to 3.2 g/t Au and are concentrated along a 2.2 km interpreted structure that extends through ML21-016 NW-SE

Compilation of results indicates widespread gold mineralization over an area measuring 1700m by 1500m and several high-quality drilling targets.

In addition, the gold mineralization exhibits a spatial association with a NE trending weak-moderate chargeability signature with a corresponding highly conductive zone, which is at least 3 km in length.

The area of geochemical anomalies includes a parallel trending chargeability high which lies approximately 1 km NW of the chargeability low and corresponds with a major break in the magnetic signature.

The whole area appears to coincide with an inflexion point on the regional-scale Cape Ray – Valentine Lake structure.

Moonlight zone



Regional Discoveries

The Stony Lake Project is contiguous to and covers the southwest extension of Sokoman Mineral's Moosehead high-grade gold discovery. It also lies North East of Marathon's Valentine Lake Deposit and West of New Found Gold's Queensway discovery.

Regional Significance



Indicates gold potential in this portion of Newfoundland



Classified as orogenic style gold setting



Intersections of high-grade gold mineralization

Selected Drilling Results

Sokoman

MH-18-01 returned 11.9 m of 44.96 g/t Au

News release July 24, 2017

MH-20-86 returned 4.70 m of 18.60 g/t Au

News release July 15, 2020

MH-18-08 returned 1.05 m of 207.1 g/t Au from 8.50 m to 9.55 m and 2.28 m of 42.36 g/t Au

Sokoman news release Aug. 28, 2018

New Found Gold

NFGC-19-01 returned 92.9 g/t Au over 19 m incl.

285.29 g/t Au over 6 m

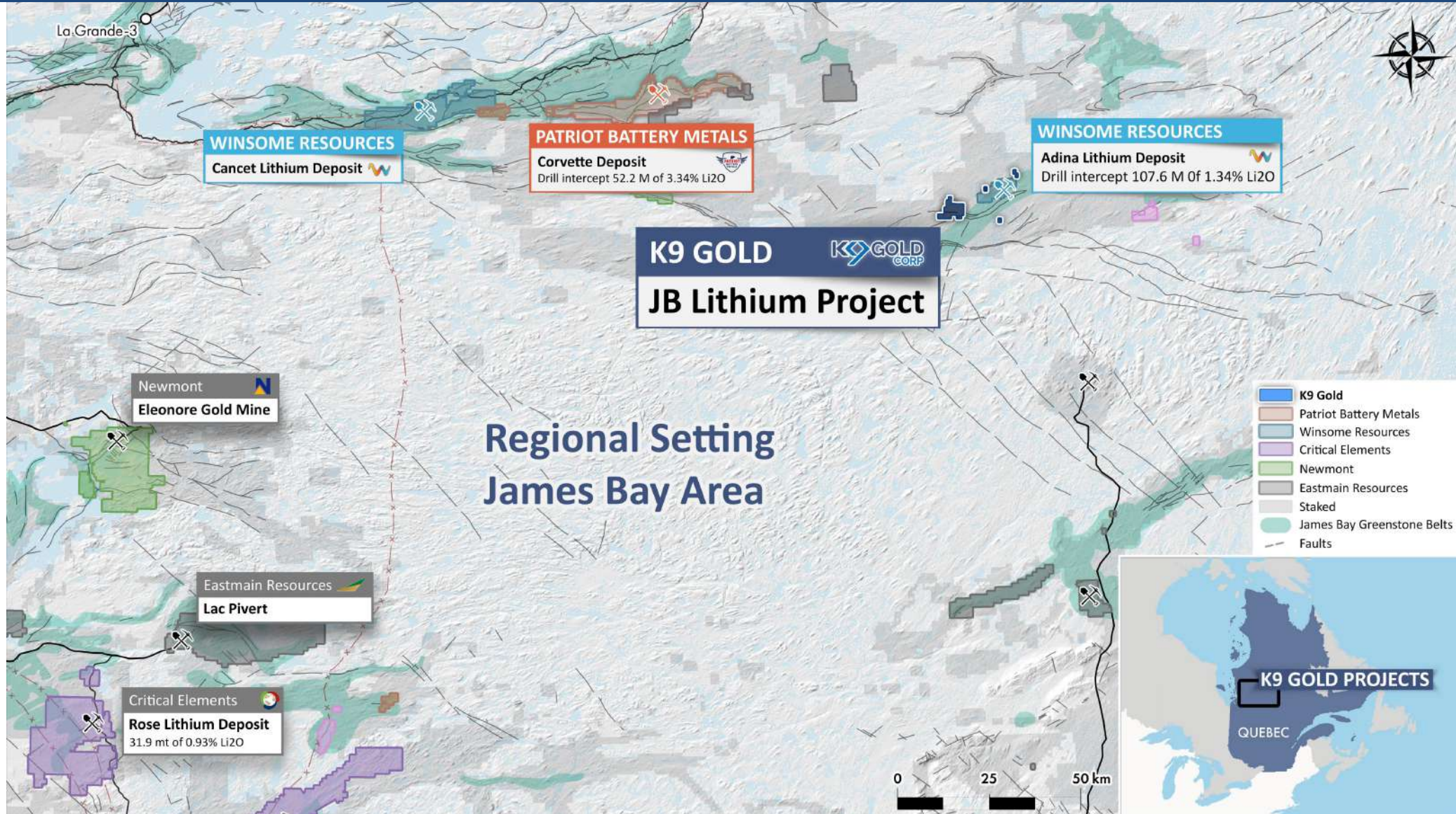
corp. presentation 2020

Marathon Gold

VL-20-823 returned 3.33 g/t Au over 120.0 m incl. 11.83 g/t Au over 10 m

News release July 2020

JB Lithium Project- Claim Location



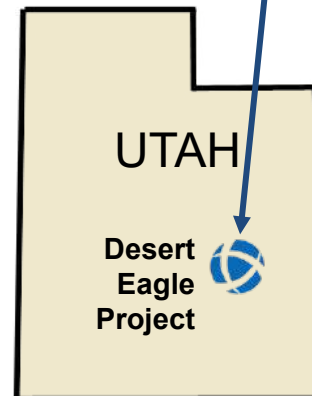
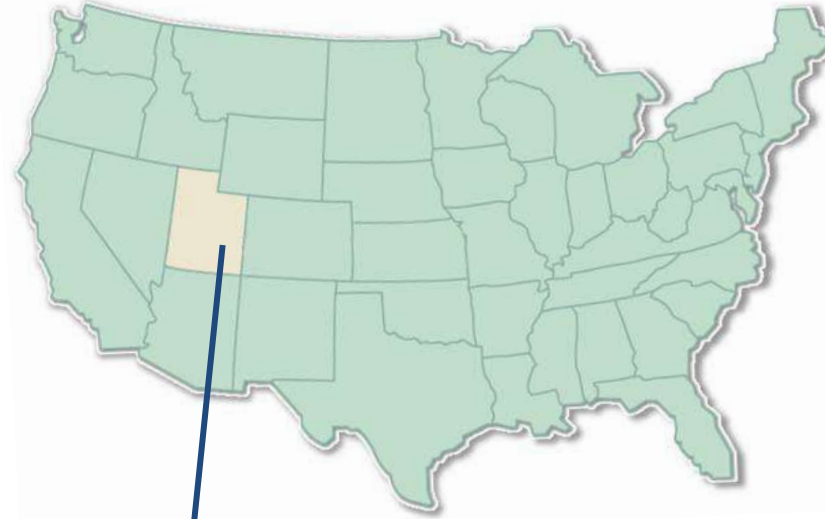
JB Lithium Project

- The JB Lithium Project is located in the La Grande sub-province of the Archaean Superior Province in Quebec. The Trieste Formation, which hosts lithium mineralization on the adjacent Adina property, transects the James Bay project area. Within the property boundaries, this Meso-Archaean age formation is mainly an ensemble of mylonites and banded amphibolites derived from basalt, which have been intruded by various intermediate rocks. A significant band of tonalite, part of the Meso-Archaean age Kamusaawach Intrusion, cuts through the centre of the property. Also cutting through the claims is a band of the Neo-Archaean Richardie Suite, an intrusive biotite-magnetite-hornblende granodiorite. The northern portion of the property is underlain by the Neo-Archaean Sauvolles Pluton, which is mainly of granitic composition. There is also a prominent Paleoproterozoic-age mafic dyke (Senneterre dyke system) cutting through the north of the property with a NE-SW orientation

The property comprises 41 mining claims, totaling 2114 hectares. The property is located approximately 350 km south-southeast of Radisson, Quebec. Other projects in the area include Patriot Battery Metals Corvette project located 50 km to the west and Winsome Resources Lithium Adina project located approximately 5 km to the east. The James Bay property is underlain by a package of Archaean rocks that is similar to the geological setting of the Corvette and Adina projects

THE DESERT EAGLE VANADIUM PROJECT

- 2,004 Acre premium land package in well known Vanadium district
- Wide-spread historic Vanadium and Uranium production
- Underground workings were up to **28.2% V₂O₅ (Vanadium Pentoxide)**
- 2.8km long trend of high grade Vanadium mineralization outcropping on the property
- Historically developed for Uranium-Vanadium however significant occurrences of Vanadium exist with little to no Uranium
- Multiple ore types present on property,
 - Vanadium-rich sandstones
 - Vanadium-rich shale
 - Vanadium-rich mudstone
 - Vanadium > Uranium Mineralization
- Completed 43-101 Technical Report

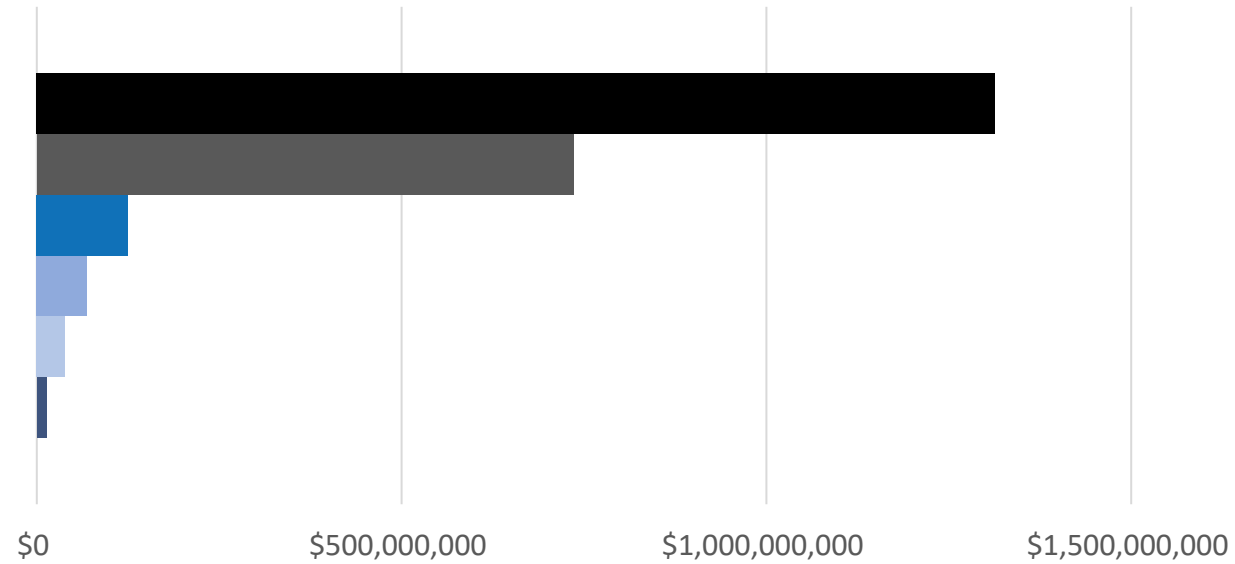


UTAH

- Intensively mined for Vanadium and Uranium since 1909
- Morrison formation (present on property) is the principle domestic source for Vanadium for the USA
- Significant occurrences of high - grade Vanadium exist with low Uranium content
- Mining friendly state



Comparable Companies



- New Found Gold Corp.
- Marathon Gold Corporation
- Labrador Gold Corp.
- Sokoman Minerals Corp.
- Exploits Discovery Corp.
- K9 Gold Corp.

	K9 Gold Corp.	Exploits Discovery Corp.	Sokoman Minerals Corp.	Labrador Gold Corp.	Marathon Gold Corporation	New Found Gold Corp.
Project	Stony Lake	Jonathan Pond, True Grit, Dog Bay, Mt Peyton, Middle Ridge	Moosehead	Kingsway	Valentine	Queensway
Ownership	100%	100%	100%	100%	100%	100%
Size of Project	13025 HA	2111km ²	2450 HA	7700 HA	24000 HA	1500km ²
Project stage	Exploration	Exploration	Exploration	Exploration	Production	Exploration
Shares Outstanding	69,794,007	118,871,136	214,282,503	169,189,979	395,786,777	169,230,764
Share Price	\$0.06	\$0.24	\$0.26	\$0.33	\$0.96	\$6.27
Market Cap	\$4,187,640	\$28,529,072	\$55,713,450	\$55,832,693	\$379,955,305	\$1,061,076,890



Management & Share Structure

Management

Jeff Poloni
CEO, President, Director

Brian Morrison
CFO, Director

Kosta Tsoutsis
Director

Chris Healey, P.Geo
Chief Geologist, Director

Advisors

Dr. Andreas Rompel
Technical Advisor

Elmer Stewart, P.Geol
Technical Advisor

Share Structure

Shares Outstanding	69,794,007
Warrants Outstanding	
@\$0.20	13,634,464
@\$0.42	3,220,920
@\$0.40	20,771,744
Options Outstanding	
@\$0.165	500,000
@\$0.55	1,500,00
@\$0.32	1,375,000
@\$0.45	300,000
@\$0.56	1,200,000
Fully Diluted	98,661,671

Contact information

1455 Bellevue, Suite 300
West Vancouver, BC, V7T 1C3

Jeff Poloni *CEO & Director*
jeff.poloni@gmail.com
+1 604 454 8874

Brian Morrison *CFO & Director*
brian@millenniallithium.com
+1 604 312 6910

